



INTERMOUNTAIN[®]

GAS COMPANY

A Subsidiary of MDU Resources Group, Inc.

INTEGRATED RESOURCE PLAN

DECEMBER 3, 2025

INTERMOUNTAIN GAS RESOURCE ADVISORY COMMITTEE (IGRAC)

WELCOME

- Introductions
- Feedback Process
- Agenda

FEEDBACK SUBMISSIONS



- IRP.Comments@intgas.com
- Please provide comments and feedback within 10 days

AGENDA

- **Welcome & Introductions** – Brian Robertson (*Manager, Supply Resource Planning*)
- **Safety Moment** – Brian Robertson (*Manager, Supply Resource Planning*)
- **Upstream Capacity Needs** – Brian Robertson (*Manager, Supply Resource Planning*)
- **Questions/Discussion**

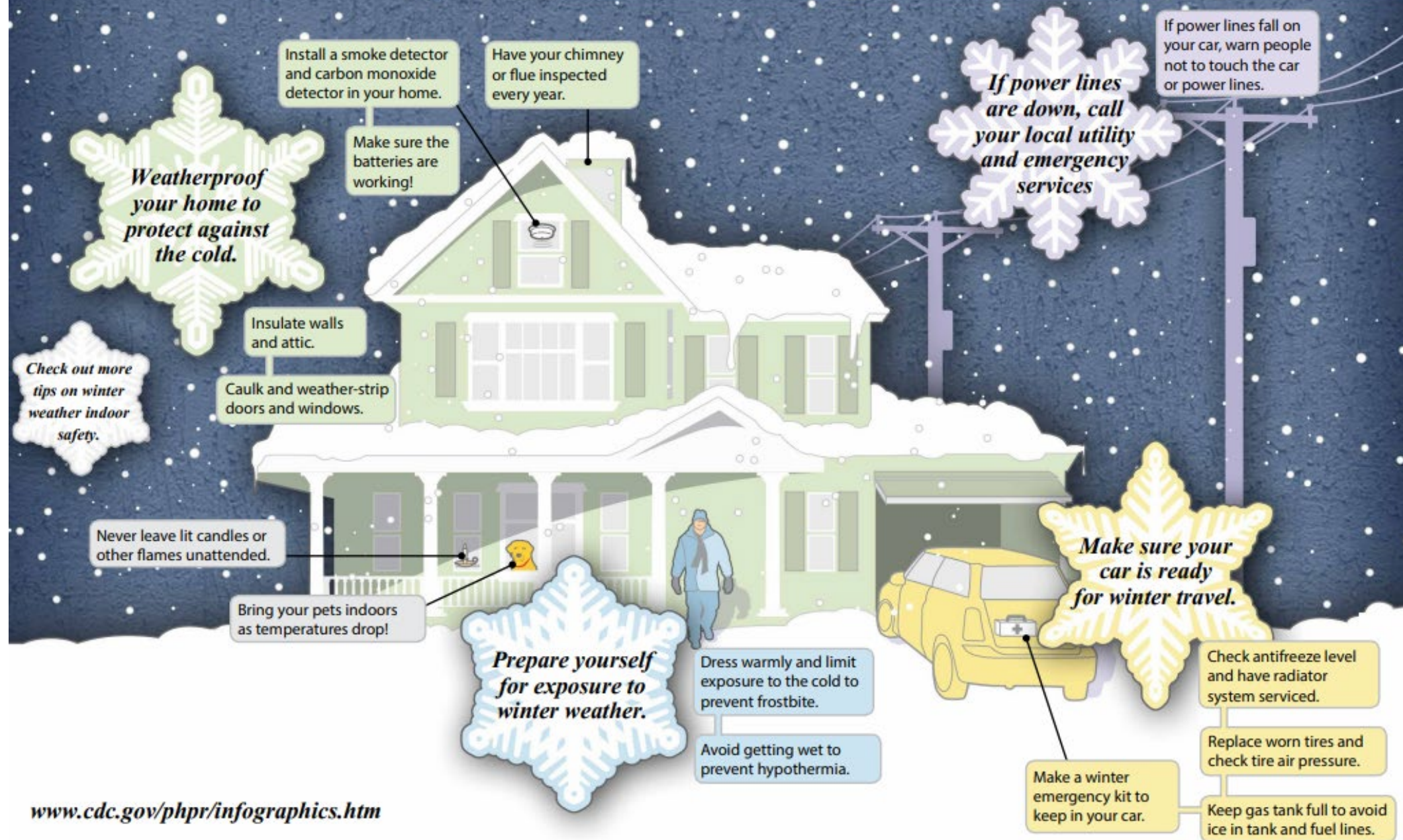


SAFETY MOMENT

BRIAN ROBERTSON

MANAGER, SUPPLY RESOURCE PLANNING

Be Ready! Winter Weather



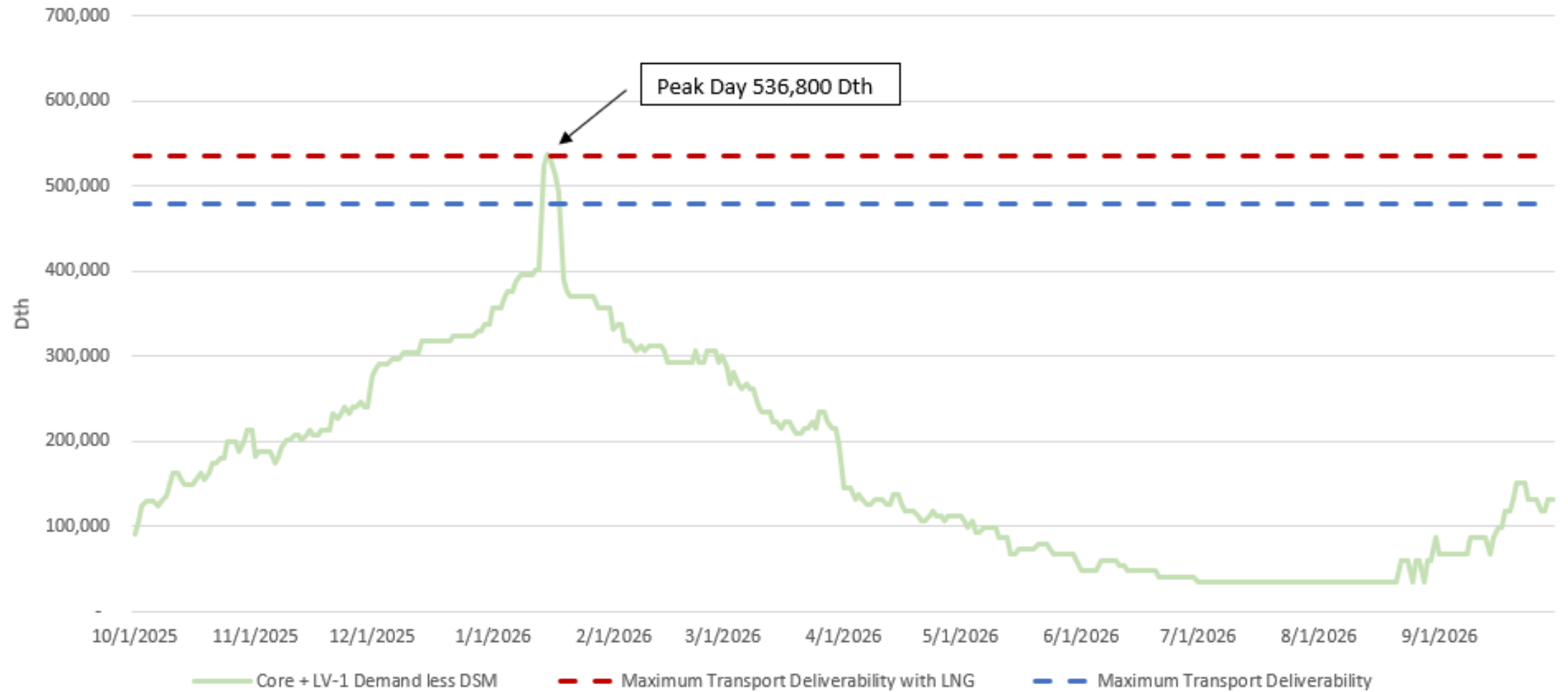


UPSTREAM CAPACITY NEEDS

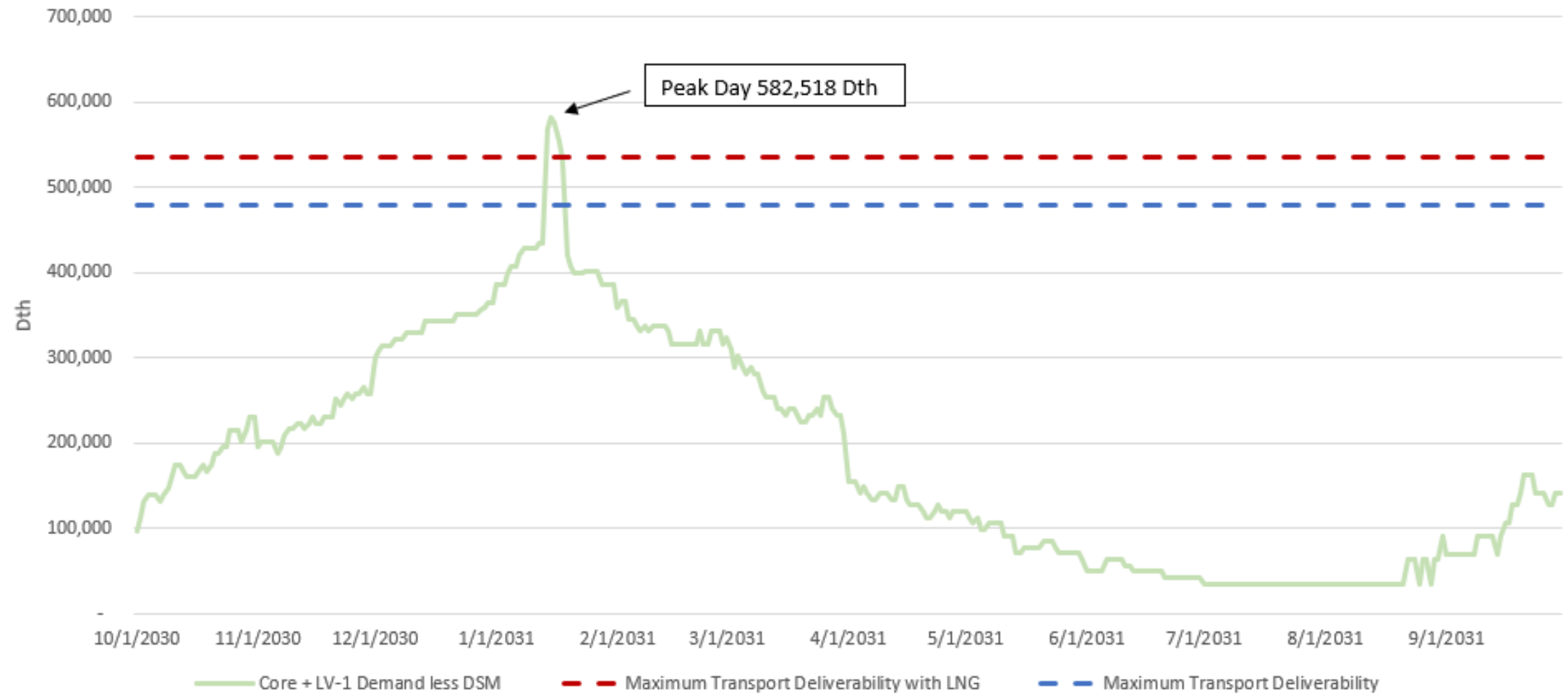
BRIAN ROBERTSON

MANAGER SUPPLY RESOURCE PLANNING

2025 Load Demand Curve
Design Base Case
Total Company



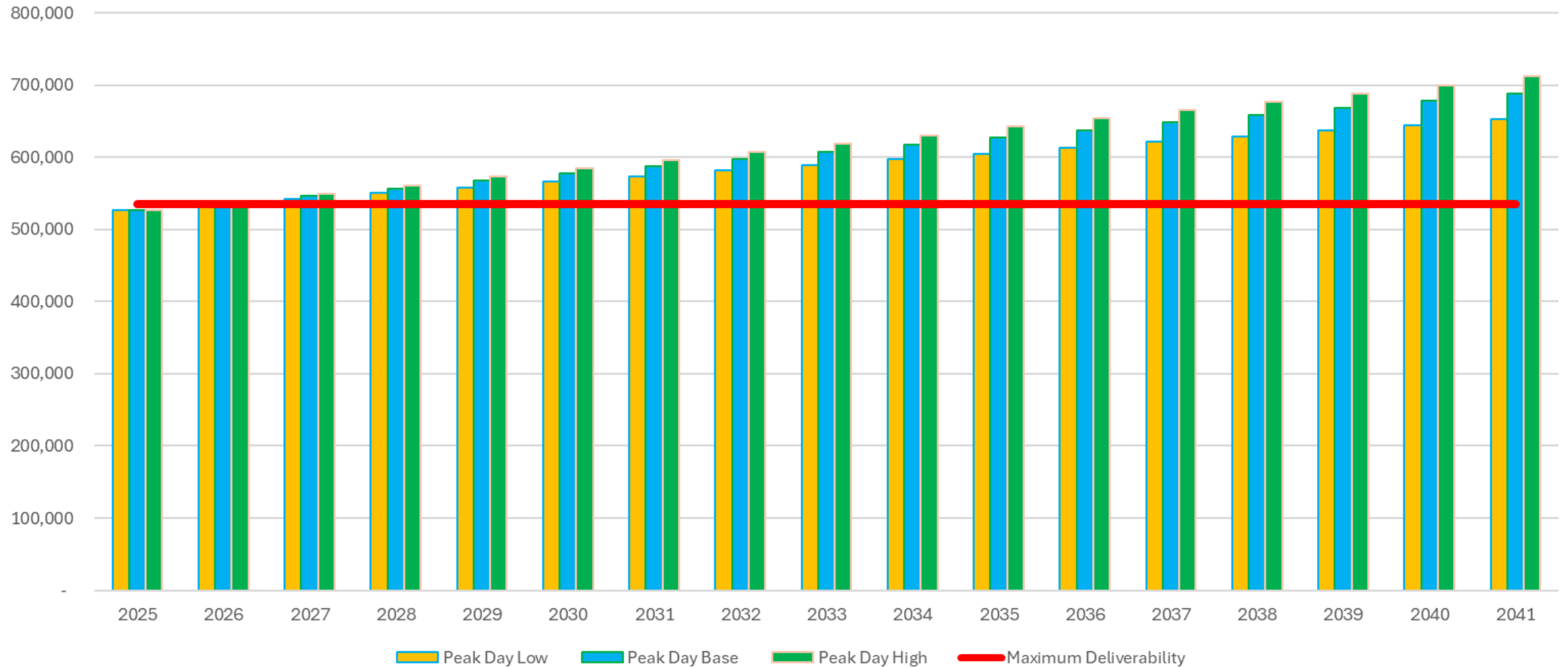
2030 Load Demand Curve
Design Base Case
Total Company



RESOURCE CAPABILITIES (VOLUMES IN DTHS/D)

[illegible]

Peak Day Load (Dths) Compared to Current Maximum Deliverability of Resources

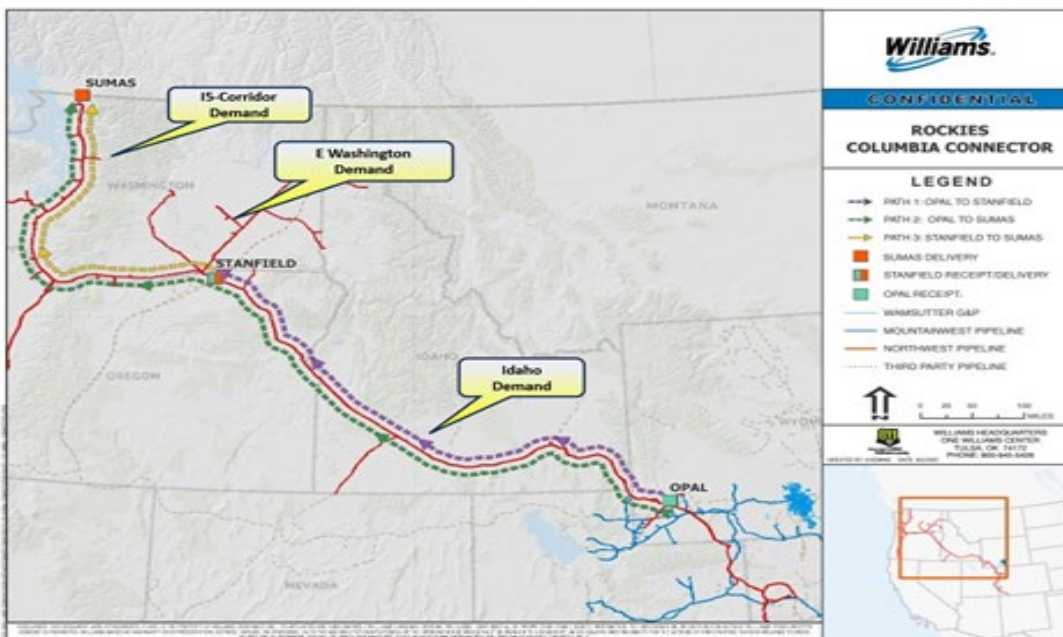


OPTIONS AND ALTERNATIVES

- Upstream options
 - Supply
 - Storage
 - Transportation
- Downstream options
 - LNG
 - DSM
 - Electrification
- Others?

REVIEW OF ROCKIES COLUMBIA CONNECTOR PROJECT

Rockies Columbia Connector (Proposed)



Project Overview:

- Integrated expansion of NWP mainline to provide firm incremental transportation from the Rockies Opal area and Stanfield, OR with delivers to Idaho and points along the I-5 corridor

Project Benefits:

- Supports growth in region
- Access to Rockies supply
- Executable – Brownfield project – No showstoppers
- Enhances energy resiliency and reliability during peak demand periods
- Addresses a ~300 MMcf/d supply shortfall due to Woodfibre LNG in 2027
- Estimated CO2 emissions reductions up to 43,000 tons/year from NWP operations

Project Status:

- Non-Binding Open Season closed August 6, 2025 (Open Season offered up to 650 MMcf/d)
- Negotiating Precedent Agreements – Q4 2025
- Finalizing scope based on Open Season / commitments

LNG PEAK-SHAVING FACILITIES

Utility	Facility	IRP / Planning Link	Regulatory Filing	Reported Project Cost	Storage Capacity
Puget Sound Energy (WA)	Tacoma LNG	PSE Gas IRP	WA UTC docket UG-230393	~\$489 million capital cost (end of 2022)	~9.6 million dth
Pacific NorthWest LNG (BC, canceled)	Lelu Island LNG Export Project	NA (Petronas)	BC EAO, CEAA 2012	Planned \$11.4–18 billion investment	~18–20M Dth annually
NW Natural (OR/WA)	Peak-shaving LNG	NW Natural IRP	OPUC docket UG 456	undisclosed	Capacity in PHMSA/permit filings
FortisBC (BC)	Tilbury LNG	BCUC Tilbury LNG CPCN	BCUC Order G-62-23	~\$1.14 billion	~25.4 million dth

FOOTNOTES

- PSE Tacoma LNG: [december12023.pdf](#), [PSE LNG FEIS Cover Pages.pdf](#)
- Lelu Island LNG: [Pacific NorthWest LNG Project, British Columbia - Offshore Technology](#)
- Northwest Natural: [lc79has155146.pdf](#)
- FortisBC Tilbury LNG: [BCUC Approves FortisBC's Tilbury Liquefied Natural Gas](#)

ESTIMATED RATE IMPACT TO RESIDENTIAL CUSTOMERS

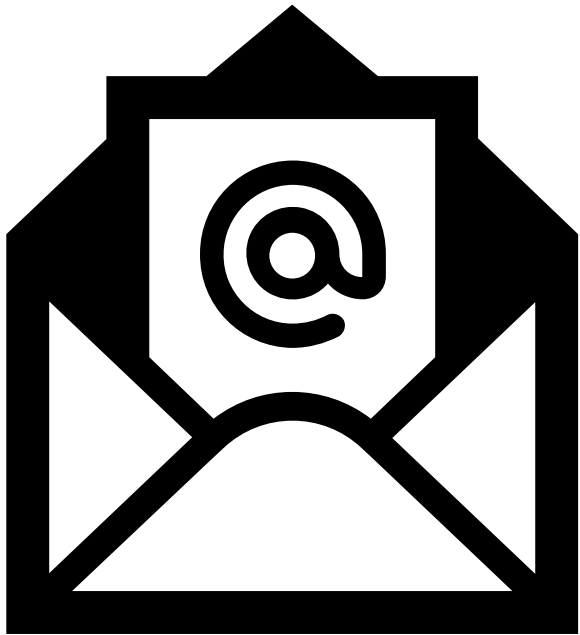
The table below reflects the estimated rate impact in 2030 to residential customers based on Rockies Columbia Connector capacity acquired. It's important to keep in mind by the time you get out to 2030, the impact of the expansion will be less because of customer growth will increase the billing determinants.

	100,000 Dths/d
Estimated Annual Revenue Impact of RCC Reservation Charge	\$60,225,000
Percentage Increase	20.8%



QUESTIONS?

FEEDBACK SUBMISSIONS



- IRP.Comments@intgas.com
- Please provide comments and feedback within 10 days